

WQS

Nomasense CO₂ P2000

Quick Guide

1. Getting started

- Press ON/OFF key to turn on/off the device



2. Temperature selection

- Press TEMP/MEM to activate the temperature selection function
- Press MEASURE to select the required temperature, from 0°C to 25°C in steps of 5°C
- Validate your temperature setting by pressing ON/OFF Key



1



2



3

3. Measurement

- Fill 50 mL of wine to measure into the test bottle and close it with rubber septum and the aluminum cap

Note: to ensure the best repeatability, it is recommended to use a graduated cylinder of 50 mL to fill the flask

- Shake the bottle vigorously for 10 seconds
- Open the valve of the syringe in order to expulse pressure from the bottle when piercing the septum
- Pierce the septum with the syringe
- Close the valve as soon as the needle is positioned in the headspace of the test bottle
- Press MEASURE to launch measurement
- Result appears on the display after 10 seconds

Note: Before the next measurement, evacuate all CO₂ gas particles of the flask by filling it totally with water



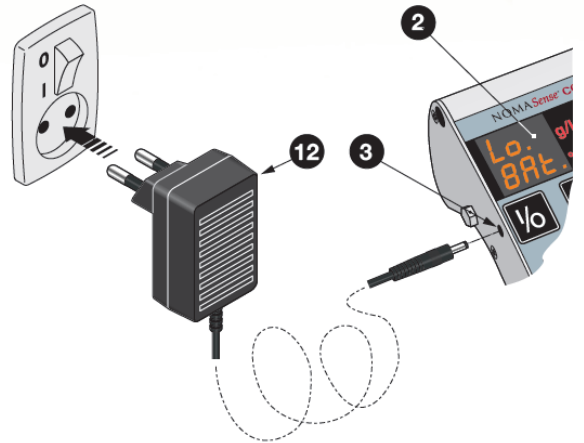
4. Calibration

- Calibration is required when a known content of CO₂ is measured and value deviates by more than 0.1 - 0.2 g/L

Please, contact [Vinventions WQS](#) for calibration service.

5. Battery charging

- When the display shows **LoBAT** ; charge the battery
- Connect the battery charger into the device and into the power supply



6. Replace needles, filters and valves

- Change needle, filter and valve in case of aberrantly values or if particles or liquid has been sucked